



Dear Wallaroo Families,

We are just over half way through the term and it seems like the weeks are just flying by! Students have settled in well and are focused on making every moment of learning count. Ensuring your child/ren have a regular routine each morning and evening will continue to help them engage with their learning and school life at Wallaroo. Screen-free time is vital and a regular bedtime will greatly help your child. A set 'wake up time' each morning, using an alarm for example, will also help your child to ensure they arrive at school on time and are ready to learn!

Open Afternoon:

We invite all families to a special open afternoon, to visit your child's classroom and see what they have been learning. Classrooms will be open this Wednesday from 2pm—4pm, with a BBQ commencing at 3.15pm. We look forward to celebrating our students' learning with our families.

Easter Raffle:

We will run our annual Easter Raffle again this year, at this time we are accepting donations to make up Easter baskets. Raffle tickets are now available from the office.

Adults entering Curriculum Building and Classrooms:

A friendly reminder to families that during 9am—3.15pm, (with the exception of our Open Afternoon), *only staff and students* are to enter the Curriculum Building and classrooms. We request that all parents/guardians wait at the office for their children and refrain from entering classrooms. There have been several instances where parents have interrupted a lesson to speak with a teacher. Learning is valuable and the safety and wellbeing of our students and staff is our priority and these interruptions are not appropriate. You may request to speak with your child's teacher before morning music, at end of day or by contacting your child's teacher via their classroom Seesaw app.

Attendance:

Every month, each grade has the opportunity to win a pizza party to celebrate achieving the highest or most improved attendance. February winners will be announced at the next assembly. If your child is absent from school, please ensure you notify us via Sentral Parent Portal each day and provide a reason.

Attendance Matters—every day counts AND every minute at school is equally important!

Late Attendance = Lost Learning					(over one full academic year)
5 minutes late per day	10 minutes late per day	15 minutes late per day	20 minutes late per day	30 minutes late per day	
3 days lost	6.5 days lost	10 days lost	13 days lost	19 days lost	

Sincerely,

Jenny Brennan

Principal



Dates to remember:

8 March Open Afternoon

13 March

Public Holiday

10 March Assembly— 5/6M presenting

15—27 March

NAPLAN

Student Work Showcase



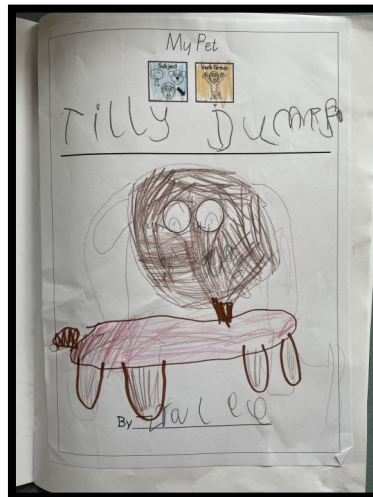
Each and every day our students display positive behaviours for learning! This week we celebrate...

Prep / 1 C

Zarlee

Zarlee has had an excellent start to her first year of school. The last few weeks, she has been learning all about sentence science. Here is a simple sentence about Zarlee's dog Tilly! Keep up the great work superstar!

-Mrs Caspar & Miss Carlie

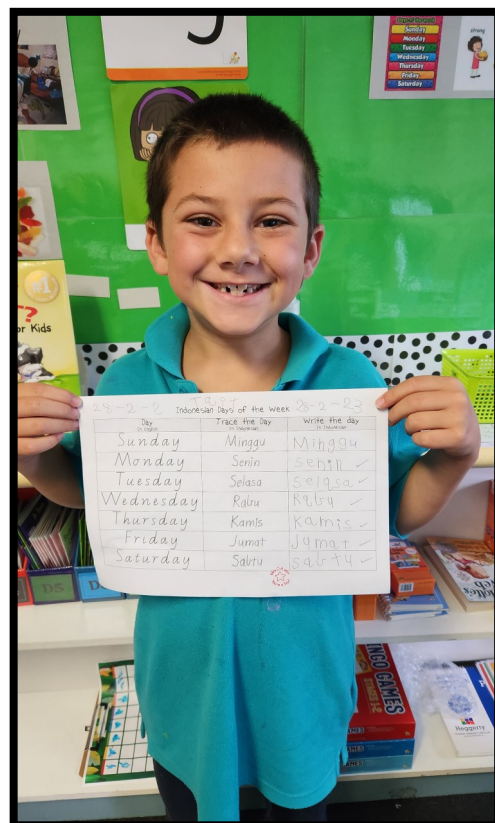


Year 1/2 CA

Tait

Tait has continued to work well this week in the classroom. He has really enjoyed learning some of the Indonesian greetings, numbers 1-10 and the 'days of the week'. Amazing effort Tait!

-Mrs Clark-Allison

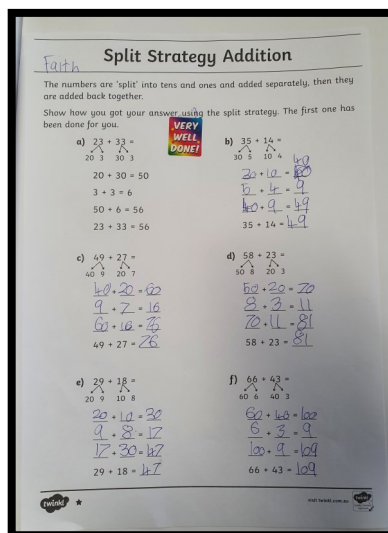


Year 3/4 G

Faith

This week in numeracy, the 3/4 students have been learning about different ways to solve an addition equation. We have been building our confidence in the split strategy. This is where we split numbers using our place value knowledge, which makes calculations easier. Faith has demonstrated her understanding of this strategy. Well done Faith.

- Mrs Wells & Corinna

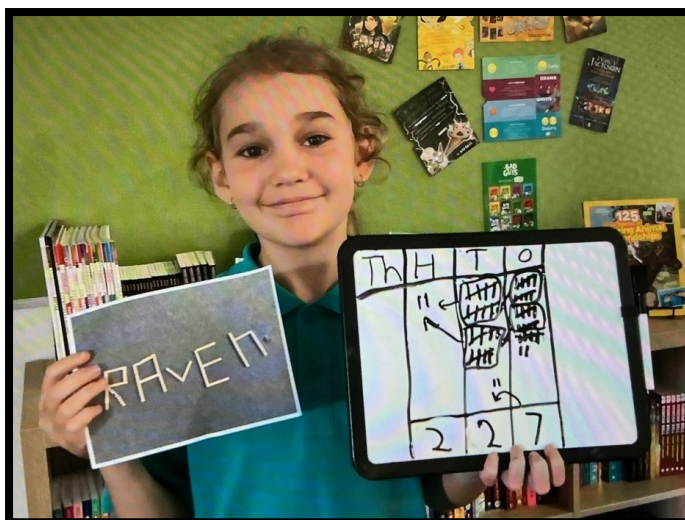


Year 4/5T

Raven

Students in 4/5T have been developing their understanding of place value. Raven did a great job of working out the value of her name, after first having made it using Base 10 Blocks.

- Miss Turner & Miss Debbie



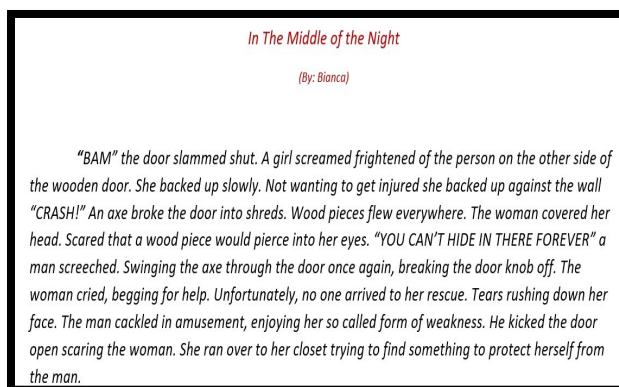
Year 5/6M

Bianca

Bianca has been learning how to write a 'Rockin' beginning' when creating her own narrative stories. Rockin' beginnings help the author 'hook' the reader. This can be done using a variety of

techniques such as onomatopoeia, shock, a quote, facts, excitement, a question or opinion, humour, repetition, or curiosity. It is also important to include lots of details and descriptive words to help the reader engage with the story and visualise what is happening. Bianca has not only sent chills up my spine but left me curious with how she will continue her story with this amazing 'Rockin' beginning. Great work, Bianca!

- Mrs Manning



FINANCIAL ASSISTANCE INFORMATION FOR PARENTS

Every Victorian child should have access to the world of learning opportunities that exist beyond the classroom. The Camps, Sports and Excursions Fund helps ensure that no student will miss out on the opportunity to join their classmates for important, educational and fun activities. It is part of making Victoria the Education State and the Government's commitment to breaking the link between a student's background and their outcomes.

CAMPS, SPORTS & EXCURSIONS FUND (CSEF)

School camps provide children with inspiring experiences in the great outdoors. Excursions encourage a deeper understanding of how the world works while sports teach teamwork, discipline and leadership. All are a part of a healthy curriculum.

CSEF is provided by the Victorian Government to assist eligible families to cover the costs of school trips, camps and sporting activities.

If you hold a valid means-tested concession card or are a temporary foster parent, you may be eligible for CSEF. A special consideration category also exists for asylum seeker and refugee families. The allowance is paid to the school to use towards expenses relating to camps, excursions or sporting activities for the benefit of your child.

The annual CSEF amount per student is:

- \$125 for primary school students
- \$225 for secondary school students

MORE INFORMATION

For more information about CSEF visit:

<https://www.education.vic.gov.au/about/programs/Pages/csef.aspx>

HOW TO APPLY

New applicants should contact the school office to obtain a CSEF application form or download from the website below.

If you applied for CSEF at your child's school last year, you do not need to complete an application form this year unless there has been a change in your family circumstances.

You only need to complete an application form if any of the following changes have occurred:

- ⇒ **new student enrolments;** your child has started or changed schools this year.
- ⇒ **changed family circumstances;** such as a change of custody, change of name, concession card number, or new siblings commencing this year.

Check with the school office if you are unsure.



Easter Raffle

Chocolate donations needed



All proceeds will go towards school resources. Raffle tickets will be available at the office the 3rd of March. Please drop any donations to the office.

Raffle will be drawn April the 6th.

ourpatch NEWS

Term 1 Week 5 Newsletter



Upcoming Activities

Gardening club on Wednesday's will continue and we will be planting our first ever vegetable's.

Don't miss out on Sushi making Thursday.

Friday fun day will include making slime and a special science experiment.



This fortnight at Our Patch

Our students have had loads of fun with our new gardening Wednesday's. We have been using worm wee gifted by our local daycare (thank you to one of our awesome parents) to make our soil ready for planting.

We did an awesome job baking dairy free and soy free vanilla cupcakes. They were incredible! We also made homemade pizzas with all sorts of toppings.



Fees

Program Fee if eligible for maximum Childcare Subsidy.

Before School Care

16.95 Permanent Booking

\$19.95 Casual Booking

Maximum childcare subsidy:

Permanent: \$424

Casual: 7.24

After School Care

\$8.91 Permanent Booking \$11.91 Casual Booking

Contact information:

1300 018 310

info@ourpatch.education

Wallaroops@ourpatch.education





At Padua College we offer an education for life, one that encourages students to utilise their God-given talent, be the best that they can be, and make a positive impact on the world.

Mornington Peninsula families are warmly invited to join one of our campus tours to explore the rich curriculum, sporting, cultural and spiritual life that our College can offer your child.

Meet our staff, see the school in action, and learn more about our new Year 7-8 Centre at Mornington and smaller class sizes.



125
YEARS OF CATHOLIC EDUCATION



YEAR 7 2025 ENROLMENTS

Open: 1 February 2023
Close: 12 May 2023

➤ Enrol online

www.padua.vic.edu.au



MOOROODUC JUNIOR FOOTBALL CLUB

We are looking for NEW PLAYERS!

For all age groups Boys and Girls

Under 9s must be 7 by the 30th April 2023



Our club focus
is on player
inclusion and fun!

WE WANT YOU!



moorooducjfc@gmail.com Sarah
Norris 0435093463

GYMNASTICS DEVELOPMENT B•NORA CLASSES!

With Olympian & Ninja
Warrior Georgia Bonora!

'Encouraging learning through
Play & Discovery'

Children will participate in a
variety of equipment based
circuits focusing on:

- Vault & Parkour
- Bars & Upper Body
- Ninja Training
- Beam & Balance Obstacles
- Floor & Acrobatics

Classes running
Wednesdays & Saturdays
at **Mount Eliza Community
Hall**



OFFERING

**FREE TRIAL CLASSES
& FREE TSHIRT!**

0407190533

admin@bonorasport.com.au

enjoy 1st Friday every month



Scones on Hastings

A great way to meet other locals
and make new friends in our
community over a cuppa and freshly
baked scones with jam 'n cream.

Cost \$2

10-11.30am 1st Friday every month
Hastings Bowling Club
40 Marine Pde, Hastings

Patrons must be fully vaccinated.
We are looking for more
volunteers to help with baking
and serving and welcome
help from business sponsorship.

Ring 0404 696 366 if you can help.
Thank you to the Hastings Bowling
Club for providing the venue for
'Scones on Hastings'



JOIN THE FUN!

**Tuerong & Surrounds:
All Girls Auskick Centre**

RM Hopper Reserve
20th February - 20th March
4:30pm - 5:30pm



For more details, contact chloe.beck@afl.com.au

Healthy Eats @ Wallaroo: Lunch Timetable



	Tuesday	Wednesday	Thursday
Nutritious food provided to students in-	P/1C 1/2CA	4/5T 5/6M	3/4G
Student Helpers from-	4/5T	1/2CA and 3/4 G	5/6M

TERM 1 2023 TRAINING FEES

\$40 joining fee includes uniform and syllabus

50%
OFF

only \$87.50

call Zoe: 0452 562 927



Crib Point Community Market

Saturday March 11th

9am to 1pm

INDOOR & OUTDOOR STALLS

Resin jewellery, hand made glass beads, cards, wood turning, soaps, knitted items, macramé, heat packs and saddle covers. Indigenous art., locally grown veggies, honey.

Plants, eco-friendly products, upcycled products, aromatherapy, Cribby Koala Treasure Hunt, Devonshire Teas, coffee, and lots more.

Proceeds go to the Crib Point Community House and community programs

Location: Crib Point Community House, 7 Park Rd,

Crib Point Email: market@cpch.org.au

Ph: 59839888

March

Student Birthdays

6th Alex	25th Jakki
8th Tayla	26th Kyuss
9th Isabella	
10th Bianca	
13th Vayda	
16th Tait	
17th Seth	



Prevention of head lice @ Wallaroo

Several students have presented with eggs (nits) and/or live head lice this week. We ask that all families school-wide be vigilant and check their child's hair this weekend and weekly thereafter.

Although the responsibility for detecting and treating head lice rests with parents, it is important that we work collaboratively with families to prevent and minimise the impact of head lice outbreaks. Wallaroo PS manages head lice in the following ways:

1. Visual head lice checks without physical contact are completed by classroom staff.

- **If eggs** are detected, families of students in the class will be notified via SENTRAL Parent Portal and a Head Lice Action Notice is sent home with the child/ren who are suspected of having eggs (nits).
 - The parent or carer of the student with suspected nits is to commence treatment that day, and fill in and return the Head Lice Action Notice detachable slip, indicating that the first treatment was completed.
 - If nits are still detected, the school and parents will repeat the process.
- **If live head lice** are detected, families of students in the class will be notified via SENTRAL Parent Portal. In accordance with DHHS policy, schools are to exclude the student for the rest of the day. At Wallaroo the following classroom exclusion practices are made:
 - The student is moved to a table and chair of their own, away from others for the remainder of the day.
 - A Head Lice Action Notice is sent home with the child and the classroom teacher will notify the parent or carer at the end of the school day.
 - The parent or carer of the student with suspected live head lice is to commence treatment that day, and fill in and return the Head Lice Action Notice detachable slip, indicating that the first treatment was completed.
 - If a student re-attends with live head lice, the classroom exclusion practices are repeated until the live head lice have been correctly removed. Another Head Lice Action Notice is sent home, a second treatment must commence.

2. Exclusion from school:

- **The student is to be excluded from attending school until the day after appropriate treatment has commenced and the signed Head Lice Action Notice detachable slip is returned.**

Note 1: only the principal has the overall responsibility to exclude a student from school.

Note 2: the presence of eggs in the hair is not a cause for exclusion (only live head lice).

Note 3: there is no requirement for a general practitioner or local council to issue a clearance certificate in order for the child to return to school.





FAMILY FUN – Autumn 2023

Warm days and cool nights of Autumn at the Briars enable us to become a bit more active. Take a tour of the Briars by using our new Geocaching trail. Engage with nature and discover new areas of the property. Learn how to protect Morrington Peninsula koalas, build your own microbat box, or enjoy playing games on the Visitor Centre Deck. Our Autumn program encourages active bodies and reflective minds.

Briars Junior Ranger – Mini Ecologist!

Can you think like an ecologist and help our rangers create safe spaces for our wildlife? Come and join our rangers as they share stories of our Wildlife Sanctuary. Meet various native animals up close and hear about what their roles are in keeping our natural spaces healthy.

12 April

10.30 – 12 noon

\$29.90 per child. Suitable for kids 6 to 10 years old.

Calling all wannabe Ecologists*

After Dark wildlife survey and animal encounter

Our Rangers manage the animal population in the Wildlife Sanctuary to ensure the health and happiness of wildlife. Join them in the Wildlife Sanctuary after dark as they demonstrate several research techniques. Assist in wildlife spotting and just for one night pretend to be an ecologist.

Suitable for all ages. If you have accessibility questions, please give us a call on 5974 3686

12 April

6 – 8pm

\$32 adult, \$25.90 concession/child

Build a Bat Box*

Enter the Wildlife Sanctuary to discover more about microbats. These amazing tiny mammals are undergoing a feeding frenzy to survive winter. Then build your very own bat box for home. Installing your very own Microbat sanctuary at home is a great way to encourage bats to visit your backyard, where they will assist to pollinate, fertilise, and reduce the number of insects in your garden in no time.

6 May and 20 May

2 – 4pm

\$23.60 Adult/child/concession. Suitable for 8 years and older.

Briars Geocaching

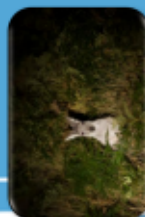
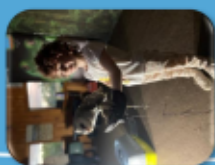
Want to take treasure hunting to the next level? Then the Briars site-wide geocaching is for you! We're putting a Briars spin on traditional geocaching with themed 'caches' or boxes hidden onsite. You'll get a clue to where each cache is hidden, but that doesn't mean they'll be easy to find! Grab your family, friends, or go solo on this self-guided geocaching adventure to find out what is awaiting in each cache. See our rangers in the Visitors centre to begin your Briars Geocaching adventure.

March, April, May

10am - 4.30pm

Free

*Registrations and Bookings are essential for programs/walks and can be made by visiting <https://the-briars.eventbrite.com.au>
Instagram: @briarsmtmartha Facebook: @BriarsMtMartha
Telephone: 5974 3686



Koala Country

Learn about the Peninsula's koalas and how you can help care for koala country. Join us at 10 am for a Welcome to Country with Bunurong Traditional Owners and a talk from Deakin Uni researchers about their study into the Peninsula's koalas. Sign up for other activities on the day. Browse the stalls and talk to local volunteers about how you can care for koala country or bring a picnic.

18 March

10am – 1pm

FREE

Please register in advance: morpen.vic.gov.au/koalaevent

Australian Native Plant Sale

Interested in native plants but not sure how to grow them, what will suit your garden or when to prune them? Come along to the Australian Plant Society sale and pick the brains of the experts. Buy from up to 10 local and regional growers of native and indigenous plants. Short sessions run on pruning, maintenance, and propagation. Book stall for you to pick up a wide range of reference books. Kids are welcome to get up close to touch and feel some of the range of interesting flowers and fruits that our native plants display.

29 April

10am – 3.30pm

Free Entry

Mount Martha Briars Market

Purchase the freshest food, the most unique gifts and the most innovative homewares from across the region and engage with our talented stallholders, all of whom love their craft. Presented by Craft Markets Australia.

26 March and 28 May

9am – 2pm

Free Entry

Parking \$5 or \$3 parking for Morrington Peninsula Shire Residents

Games on the Deck

Challenge your family to a game of chess and backgammon, or another of our fun free Games on the Visitor Centre Deck! Available every day during Easter school holidays and on the weekend.

March, April, May

10am – 4.30pm

Free

Nursery

The Shire Nursery specialises in native and indigenous plants. Our experienced nursery staff can advise you on the best plants for your place.

Wednesday to Friday 9am – 3.30pm and the 1st Saturday of every month 9am – 1pm

For more information call 5974 8417 or email nursery@morpen.vic.gov.au

Eco Living Display Centre

Discover how easy it can be to create a healthier, more energy-efficient home.

Friday 1-4pm and the 1st Saturday each month 9am – 1pm.

Free Entry

For more information go to: morpen.vic.gov.au/ecollivingcentre



Art

Prep/1s had fun making a picture using shapes and paint.



Grade 5/6 and Prep/1 buddy art. It was a fun session watching the buddies creating a buddy paint wall.

Grades 1-6 have been focusing on the works of Friedensreich Hundertwasser. They love calling them the crazy lollypops.

